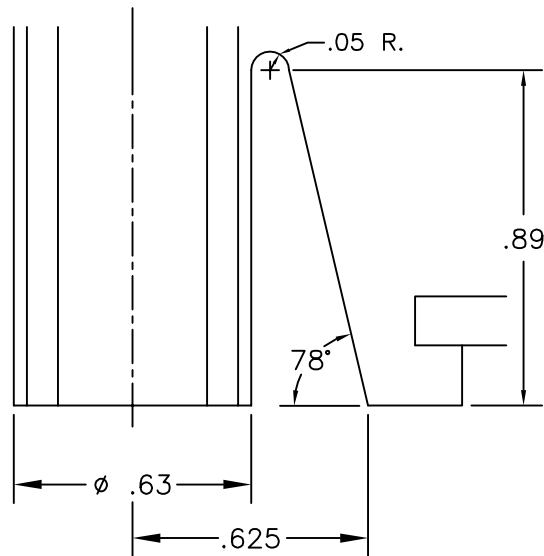


REV.	DESCRIPTION	DATE	BY

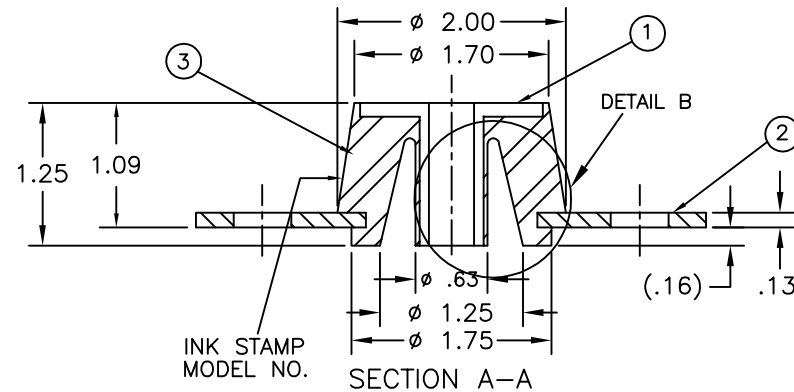
PART NO.	MODEL NO.	COMPOUND	DUROMETER	MAX. LOAD
108A-100466-01	LRX1-40	RC011	32±4	40
108A-100466-02	LRX1-75	RC013	44±4	75
108A-100466-03	LRX1-100	RC015	52±4	100
108A-100466-04	LRX1-150	RC017	60±4	150
108A-100466-05	LRX1-230	RC019	70±4	230

Technical drawing of a mechanical part, likely a pulley or gear, showing dimensions and features. The drawing includes the following specifications:

- Overall width: 4.50
- Overall height: 2.50
- Inner diameter: $\phi .396 \pm .020$
- Slot dimensions: SLOT .615 L X .340 W (2) PLACES
- Dimension 3.813 \pm .005 indicates the distance between the centers of the two slots.
- Section lines labeled 'A' indicate the location of section A-A.



DETAIL B



CERTIFIED FOR:

JOB NAME: _____

CUSTOMER : _____

CUSTOMER P.O.: _____

SALES ORDER: _____

MODEL LRX1 40-230 LBS.
LOW PROFILE
SLOTTED ELASTOMERIC ISOLATOR



THE VMC GROUP
The Power of Together
 Bloomington, NJ 07403
 Houston, TX 77041

SCALE :

NONE

SHEET:

DRAWING NO.:

REVISION	
----------	--

